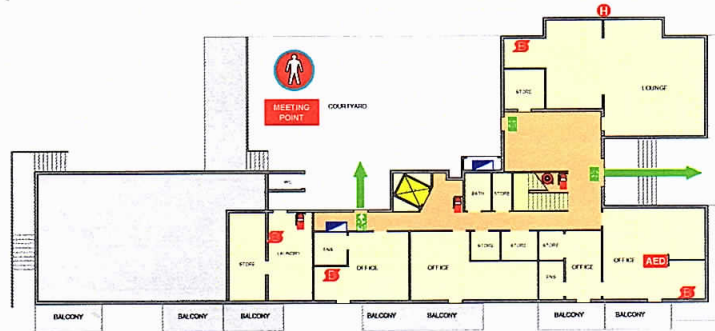
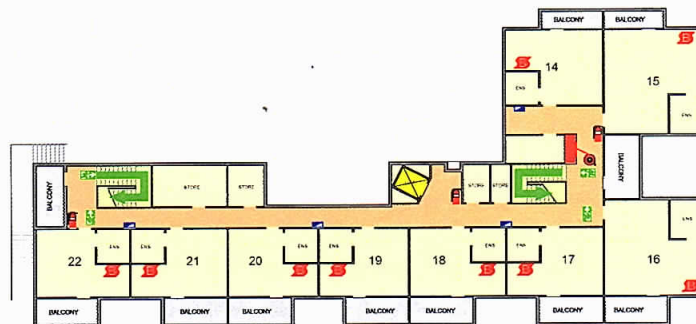


EMERGENCY EVACUATION PLAN

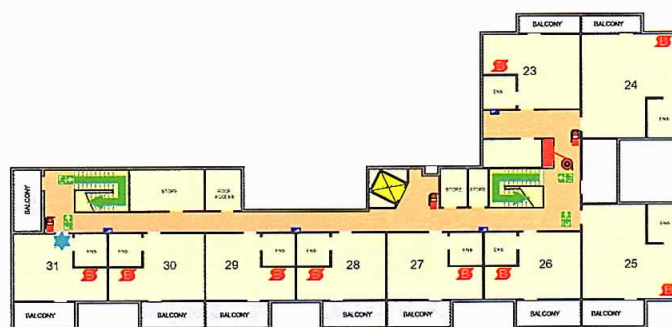
GROUND - No 14



FIRST FLOOR - No 14



SECOND FLOOR - No 14



STANDARD FIRE ORDERS



1. **R. REMOVE & ASSIST ANY PERSON IN IMMEDIATE DANGER IF SAFE TO DO SO**
2. **A. ALERT & CLOSE THE DOOR TO CONTAIN SMOKE AND FIRE**
3. **C. CONTAIN & NOTIFY THE EMERGENCY SERVICES ON 000**
4. **E. EXTINGUISH & ATTACK THE FIRE, IF SAFE TO DO SO**
5. **EVACUATE TO ASSEMBLY AREA**
6. **REMAIN AT ASSEMBLY AREA AND ENSURE EVERYONE IS ACCOUNTED FOR**

LEGEND

AED AUTOMATED EXTERNAL DEFIBRILLATOR	WATER - FIRE EXTINGUISHER
EXT SIGNS	ABE - FIRE EXTINGUISHER
FIRE BLANKET	WATER METER
FIRE KIT	GAS METER
FIRE HOSE REEL	SWITCHBOARD
FIRE HYDRANT	EVACUATION ROUTE

RYDER CHESHIRE

10 - 14 Donaldson Street, Ivanhoe



200 Sun 17th
 Telephone: 01453 7006
 24 HOURS
 01453 4117
 24 HOURS
 E: essential@efss.co.uk
 W: www.efss.co.uk

RYDER-CHESHIRE VICTORIAN
 HOMES FOUNDATION INC



Job No.EFSS-100

Drg No.EV-12-OV

Issued: 31.08.17

Version No: 01