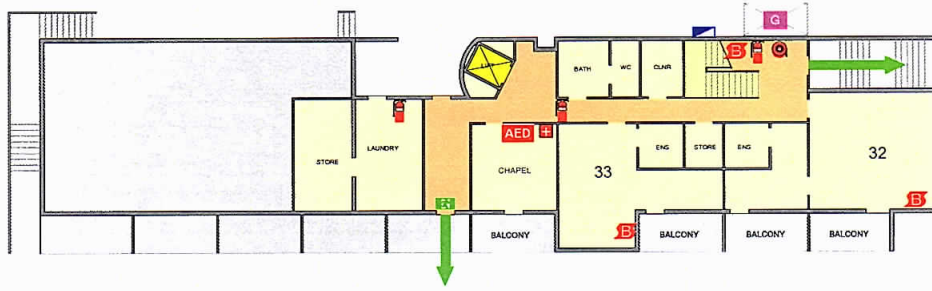
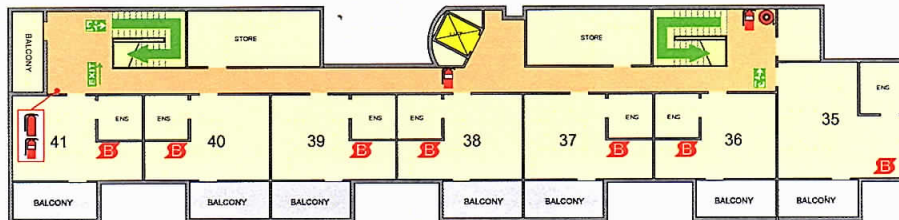


EMERGENCY EVACUATION PLAN

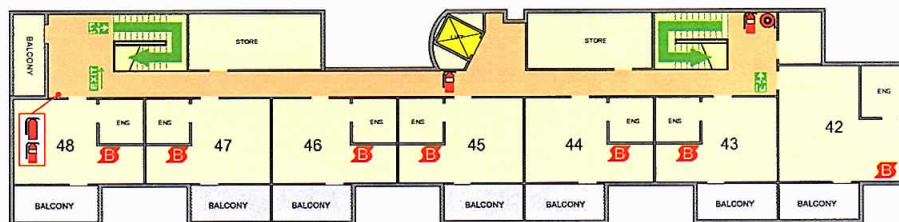
GROUND - No 12



FIRST FLOOR - No 12



SECOND FLOOR - No 12



STANDARD FIRE ORDERS



1. **R. REMOVE & ASSIST ANY PERSON IN IMMEDIATE DANGER 'IF SAFE TO DO SO'**
2. **A. ALERT & CLOSE THE DOOR TO CONTAIN SMOKE AND FIRE**
3. **C. CONTAIN & NOTIFY THE EMERGENCY SERVICES ON 000**
4. **E. EXTINGUISH & ATTACK THE FIRE, IF SAFE TO DO SO**
5. **EVACUATE TO ASSEMBLY AREA**
6. **REMAIN AT ASSEMBLY AREA AND ENSURE EVERYONE IS ACCOUNTED FOR**

LEGEND

AED	AUTOMATED EXTERNAL DEFIBRILLATOR	WATER - FIRE EXTINGUISHER
EXIT	EXIT SIGNS	ABE - FIRE EXTINGUISHER
B	FIRE BLANKET	W
+	FIRE KIT	G
H	FIRE HOSE REEL	SWITCHBOARD
H	FIRE HYDRANT	EVACUATION ROUTE

RYDER CHESHIRE

10 - 14 Donaldson Street, Ivanhoe



PO Box 70
Ivanhoe, Victoria 3106
P: 03 9422 4111
M: 0422 714 989
E: info@efss.com.au

RYDER CHESHIRE VICTORIAN
HOMES FOUNDATION INC.



Job No.EFSS-100

Drg No.EV-12-OV

Issued: 31.08.17

Version No: 01